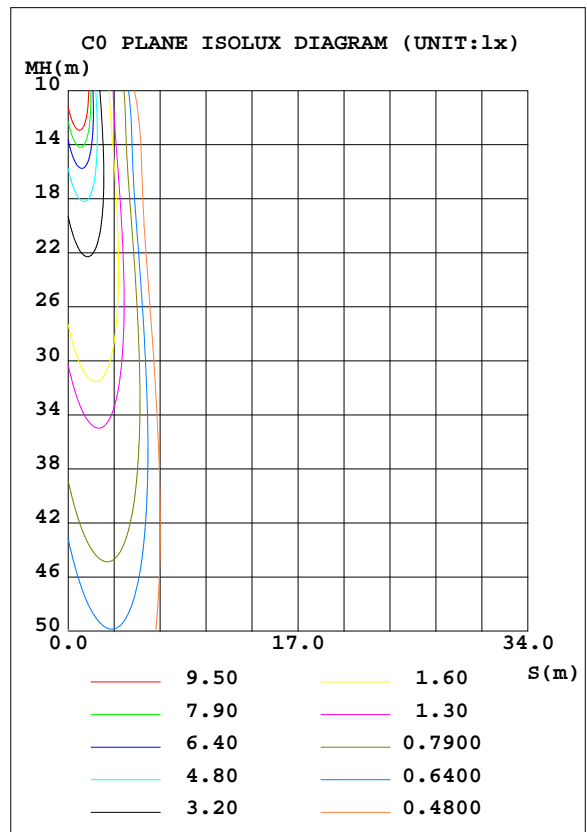
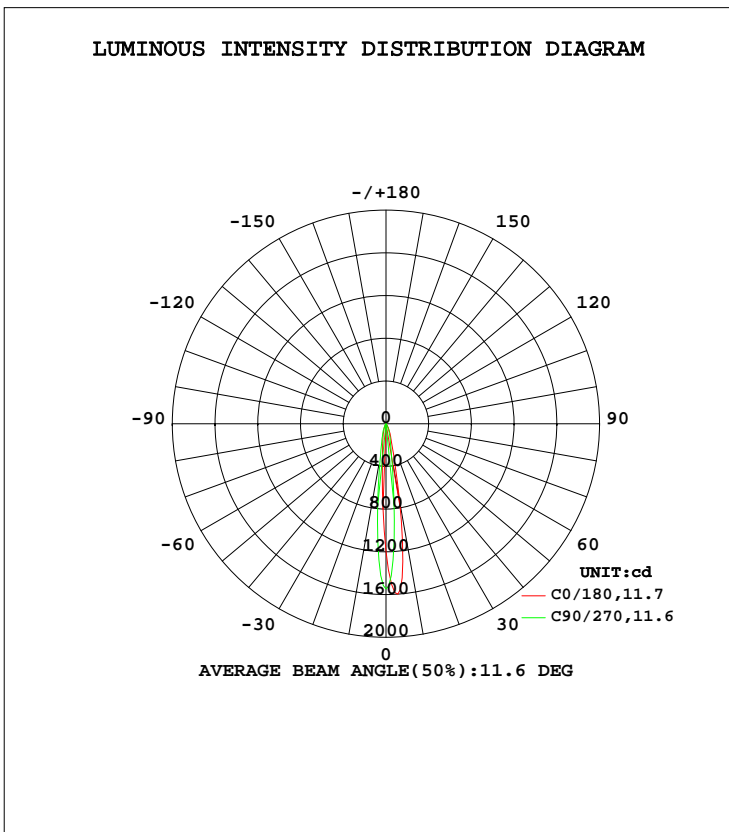


LUMINAIRE PHOTOMETRIC TEST REPORT

Test:U:230.49V I:0.0317A P:3.2602W PF:0.4458 Freq:49.99Hz Lamp Flux:150.80lx1 lm		
NAME: DL23-WH4K3S03	TYPE:	WEIGHT:
SPEC.: white RA80	DIM.:	SERIAL No.:
MFR.:	SUR.: 25mm	Shielding Angle:

DATA OF LAMP		PHOTOMETRIC DATA Eff: 46.25 lm/W			
MODEL	4000K	I _{max} (cd)	1602	S/MH(C0/180)	0.12
NOMINAL POWER(W)	3	LOR(%)	100.0	S/MH(C90/270)	0.20
RATED VOLTAGE(V)	220-240	TOTAL FLUX(lm)	150.80	η UP, DN(C0-180)	0.0,58.4
NOMINAL FLUX(lm)	150.801	CIE CLASS	DIRECT	η UP, DN(C180-360)	0.0,41.6
LAMPS INSIDE	1	η up(%)	0.0	CIBSE SHR NOM	0.00
TEST VOLTAGE(V)	220	η down(%)	100.0	CIBSE SHR MAX	1.00



C Range: 0 - 360DEG
 C Interval: 22.5DEG
 Test Speed: HIGH
 Temperature:25DEG
 Operators:
 Test Date:2024-04-05

γ Range: 0 - 90DEG
 γ Interval: 1.0DEG
 Test System:EVERFINE GO-2000B_V1 SYSTEM V2.00.428
 Humidity:65.0%
 Test Distance:7.450m [K=1.0000]
 Remarks:

ZONAL FLUX DIAGRAM

ZONAL FLUX DIAGRAM:

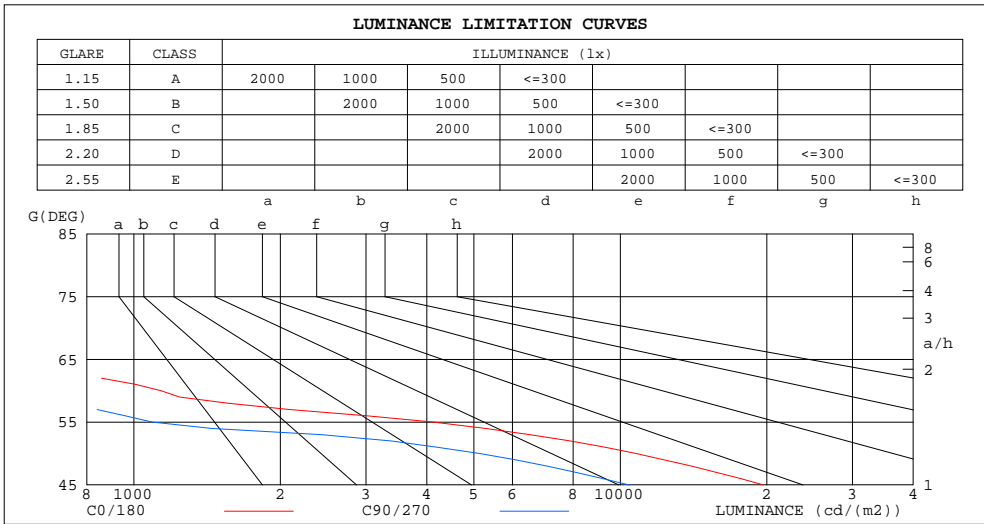
γ	C0	C45	C90	C135	C180	C225	C270	C315	γ	Φ zone	Φ total	Φ lum,lamp
10	735.7	419.6	300.9	309.5	178.7	228.0	296.8	302.2	0- 10	67.98	67.98	45.1,45.1
20	127.7	106.2	90.76	93.33	61.31	72.27	85.52	84.02	10- 20	45.49	113.5	75.2,75.2
30	42.38	34.20	28.43	28.83	17.50	21.76	27.04	26.81	20- 30	24.06	137.5	91.2,91.2
40	12.18	8.827	7.191	7.303	4.578	5.492	7.224	7.688	30- 40	9.607	147.1	97.6,97.6
50	3.389	2.139	1.614	1.533	0.3461	1.031	1.710	1.644	40- 50	3.116	150.3	99.6,99.6
60	0.2783	0.2049	0.1431	0.1238	0.0076	0.0539	0.1156	0.1118	50- 60	0.4971	150.8	100,100
70	0.0464	0.0233	0.0078	0	0	0	0	0	60- 70	0.0488	150.8	100,100
80	0	0	0	0	0	0	0	0	70- 80	0.0010	150.8	100,100
90	0	0	0	0	0	0	0	0	80- 90	0	150.8	100,100
100									90-100			
110									100-110			
120									110-120			
130									120-130			
140									130-140			
150									140-150			
160									150-160			
170									160-170			
180									170-180			
DEG	LUMINOUS INTENSITY:cd									UNIT:lm		

C Range: 0 - 360DEG
 C Interval: 22.5DEG
 Test Speed: HIGH
 Temperature:25DEG
 Operators:
 Test Date:2024-04-05

γ Range: 0 - 90DEG
 γ Interval: 1.0DEG
 Test System:EVERFINE GO-2000B_V1 SYSTEM V2.00.428
 Humidity:65.0%
 Test Distance:7.450m [K=1.0000]
 Remarks:

LUMINANCE LIMITATION CURVES

Test:U:230.49V I:0.0317A P:3.2602W PF:0.4458 Freq:49.99Hz Lamp Flux:150.80lx1 lm		
NAME: DL23-WH4K3S03	TYPE:	WEIGHT:
SPEC.: white RA80	DIM.:	SERIAL No.:
MFR.:	SUR.: 25mm	Shielding Angle:



LUMINANCE cd/(m2)		
G(DEG)	C0/180	C90/270
85	0	0
80	0	0
75	0	0
70	277	47
65	598	280
60	1136	584
55	4121	1089
50	10759	5125
45	19691	10424

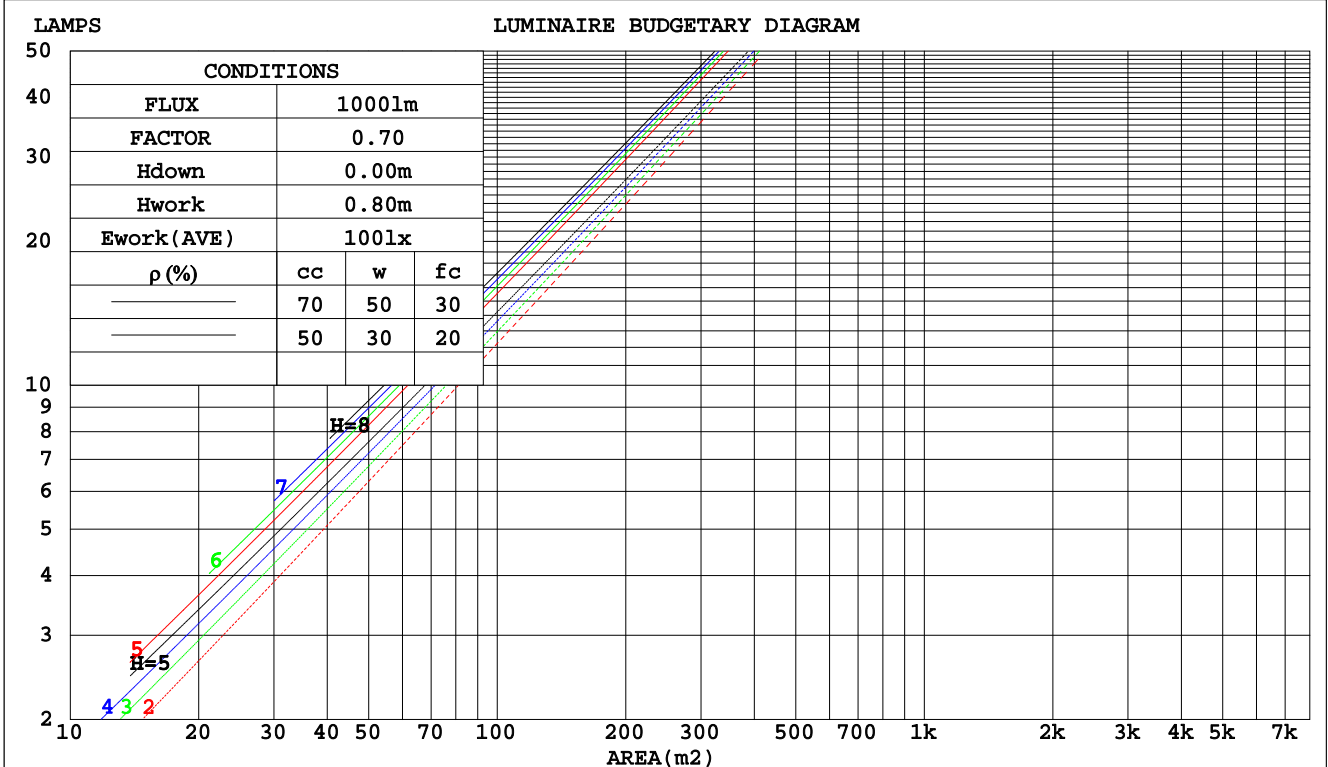
C Range: 0 - 360DEG
 C Interval: 22.5DEG
 Test Speed: HIGH
 Temperature: 25DEG
 Operators:
 Test Date: 2024-04-05

γ Range: 0 - 90DEG
 γ Interval: 1.0DEG
 Test System: EVERFINE GO-2000B_V1 SYSTEM V2.00.428
 Humidity: 65.0%
 Test Distance: 7.450m [K=1.0000]
 Remarks:

CU AND LUMINAIRE BUDGETARY ESTIMATE DIAGRAM

Test:U:230.49V I:0.0317A P:3.2602W PF:0.4458 Freq:49.99Hz Lamp Flux:150.80lx1 lm		
NAME: DL23-WH4K3S03	TYPE:	WEIGHT:
SPEC.: white RA80	DIM.:	SERIAL No.:
MFR.:	SUR.: 25mm	Shielding Angle:

pcc	80%			70%			50%			30%			10%			0
pw	50%	30%	10%	50%	30%	10%	50%	30%	10%	50%	30%	10%	50%	30%	10%	0
pfc	20%			20%			20%			20%			20%			0
RCR	RCR:Room Cavity Ratio						Coefficients of Utilization(CU)									
0.0	1.19	1.19	1.19	1.16	1.16	1.16	1.11	1.11	1.11	1.06	1.06	1.06	1.02	1.02	1.02	1.00
1.0	1.13	1.11	1.09	1.11	1.09	1.08	1.07	1.06	1.04	1.03	1.02	1.01	.00	.99	.98	.97
2.0	1.08	1.05	1.02	1.06	1.04	1.01	1.03	1.01	.99	1.00	.98	.97	.98	.96	.95	.94
3.0	1.03	.00	.97	1.02	.99	.96	.00	.97	.95	.97	.95	.93	.95	.93	.92	.91
4.0	.99	.95	.92	.98	.95	.92	.96	.93	.91	.94	.92	.90	.93	.91	.89	.88
5.0	.96	.92	.89	.95	.91	.88	.93	.90	.88	.92	.89	.87	.90	.88	.86	.85
6.0	.93	.89	.86	.92	.88	.85	.91	.87	.85	.89	.87	.84	.88	.86	.84	.83
7.0	.90	.86	.83	.89	.85	.83	.88	.85	.82	.87	.84	.82	.86	.84	.81	.80
8.0	.87	.83	.80	.87	.83	.80	.86	.82	.80	.85	.82	.80	.84	.81	.79	.78
9.0	.85	.81	.78	.84	.81	.78	.84	.80	.78	.83	.80	.78	.82	.79	.77	.77
10.0	.83	.79	.76	.82	.79	.76	.82	.78	.76	.81	.78	.76	.80	.78	.76	.75



C Range: 0 - 360DEG
 C Interval: 22.5DEG
 Test Speed: HIGH
 Temperature: 25DEG
 Operators:
 Test Date: 2024-04-05

γ Range: 0 - 90DEG
 γ Interval: 1.0DEG
 Test System: EVERFINE GO-2000B_V1 SYSTEM V2.00.428
 Humidity: 65.0%
 Test Distance: 7.450m [K=1.0000]
 Remarks:

WEC AND CCEC

Test:U:230.49V I:0.0317A P:3.2602W PF:0.4458 Freq:49.99Hz Lamp Flux:150.801x1 lm		
NAME: DL23-WH4K3S03	TYPE:	WEIGHT:
SPEC.: white RA80	DIM.:	SERIAL No.:
MFR.:	SUR.: 25mm	Shielding Angle:

ρcc	80%			70%			50%			30%			10%			0
ρw	50%	30%	10%	50%	30%	10%	50%	30%	10%	50%	30%	10%	50%	30%	10%	0
ρfc	20%			20%			20%			20%			20%			0
RCR	RCR:Room Cavity Ratio						Wall Exitance Coefficients(WEC)									
0.0																
1.0	.135	.077	.024	.128	.073	.023	.116	.066	.021	.104	.060	.019	.094	.054	.018	
2.0	.125	.069	.021	.120	.066	.020	.109	.061	.019	.100	.056	.018	.091	.052	.016	
3.0	.117	.062	.019	.112	.060	.018	.104	.056	.017	.096	.052	.016	.088	.049	.015	
4.0	.109	.057	.017	.105	.055	.016	.098	.052	.016	.092	.049	.015	.085	.046	.014	
5.0	.103	.052	.015	.100	.051	.015	.094	.049	.014	.088	.046	.014	.083	.044	.013	
6.0	.097	.049	.014	.094	.048	.014	.089	.046	.013	.084	.044	.013	.080	.042	.012	
7.0	.092	.046	.013	.090	.045	.013	.085	.043	.012	.081	.041	.012	.077	.040	.012	
8.0	.088	.043	.012	.085	.042	.012	.081	.041	.012	.078	.039	.011	.074	.038	.011	
9.0	.083	.040	.011	.082	.040	.011	.078	.039	.011	.075	.038	.011	.072	.036	.011	
10.0	.080	.038	.011	.078	.038	.011	.075	.037	.010	.072	.036	.010	.069	.035	.010	

ρcc	80%			70%			50%			30%			10%			0
ρw	50%	30%	10%	50%	30%	10%	50%	30%	10%	50%	30%	10%	50%	30%	10%	0
ρfc	20%			20%			20%			20%			20%			0
RCR	RCR:Room Cavity Ratio						Ceiling Cavity Exitance Coefficients(CCEC)									
0.0	.190	.190	.190	.163	.163	.163	.111	.111	.111	.064	.064	.064	.020	.020	.020	
1.0	.168	.158	.148	.144	.135	.128	.098	.093	.088	.057	.054	.051	.018	.017	.017	
2.0	.150	.133	.118	.128	.114	.102	.088	.079	.071	.051	.046	.042	.016	.015	.014	
3.0	.135	.113	.096	.116	.098	.083	.079	.068	.058	.046	.040	.034	.015	.013	.011	
4.0	.122	.098	.079	.105	.085	.069	.072	.059	.048	.042	.035	.029	.013	.011	.009	
5.0	.112	.086	.066	.096	.074	.058	.066	.052	.041	.038	.030	.024	.012	.010	.008	
6.0	.103	.075	.056	.088	.065	.049	.061	.046	.034	.035	.027	.020	.011	.009	.007	
7.0	.095	.067	.048	.082	.058	.042	.057	.041	.029	.033	.024	.018	.011	.008	.006	
8.0	.088	.060	.041	.076	.052	.036	.053	.037	.025	.031	.022	.015	.010	.007	.005	
9.0	.083	.055	.036	.071	.048	.031	.049	.033	.022	.029	.020	.013	.009	.006	.004	
10.0	.078	.050	.032	.067	.043	.027	.046	.031	.020	.027	.018	.012	.009	.006	.004	

C Range: 0 - 360DEG
 C Interval: 22.5DEG
 Test Speed: HIGH
 Temperature:25DEG
 Operators:
 Test Date:2024-04-05

γ Range: 0 - 90DEG
 γ Interval: 1.0DEG
 Test System:EVERFINE GO-2000B_V1 SYSTEM V2.00.428
 Humidity:65.0%
 Test Distance:7.450m [K=1.0000]
 Remarks:

UGR(Unified Glare Rating) Table

Test:U:230.49V I:0.0317A P:3.2602W PF:0.4458 Freq:49.99Hz Lamp Flux:150.80lx1 lm		
NAME: DL23-WH4K3S03	TYPE:	WEIGHT:
SPEC.: white RA80	DIM.:	SERIAL No.:
MFR.:	SUR.: 25mm	Shielding Angle:

ceiling/cavity	0.7	0.7	0.5	0.5	0.3	0.7	0.7	0.5	0.5	0.3
walls	0.5	0.3	0.5	0.3	0.3	0.5	0.3	0.5	0.3	0.3
working plane	0.2	0.2	0.2	0.2	0.2	0.2	0.2	0.2	0.2	0.2
Room dimensions	Viewed crosswise					Viewed endwise				
x = 2H y = 2H	21.9	22.5	22.1	22.6	22.8	19.5	20.1	19.7	20.3	20.4
3H	21.7	22.3	21.9	22.5	22.7	19.3	19.9	19.6	20.1	20.3
4H	21.6	22.2	21.9	22.4	22.6	19.3	19.8	19.5	20.0	20.2
6H	21.5	22.1	21.8	22.3	22.5	19.2	19.7	19.5	19.9	20.2
8H	21.5	22.0	21.8	22.3	22.5	19.1	19.7	19.4	19.9	20.1
12H	21.5	22.0	21.8	22.2	22.5	19.1	19.6	19.4	19.8	20.1
4H 2H	21.6	22.2	21.9	22.4	22.6	19.3	19.9	19.5	20.1	20.3
3H	21.5	22.0	21.8	22.2	22.5	19.1	19.6	19.4	19.9	20.1
4H	21.4	21.8	21.7	22.1	22.4	19.0	19.5	19.3	19.8	20.1
6H	21.3	21.7	21.6	22.0	22.3	18.9	19.3	19.3	19.6	20.0
8H	21.2	21.6	21.6	21.9	22.3	18.9	19.2	19.2	19.6	19.9
12H	21.2	21.5	21.6	21.9	22.3	18.8	19.1	19.2	19.5	19.9
8H 4H	21.2	21.6	21.6	21.9	22.3	18.9	19.2	19.2	19.6	19.9
6H	21.1	21.4	21.5	21.8	22.2	18.7	19.1	19.2	19.4	19.9
8H	21.0	21.3	21.5	21.7	22.2	18.7	19.0	19.1	19.4	19.8
12H	21.0	21.2	21.4	21.6	22.1	18.6	18.9	19.1	19.3	19.8
12H 4H	21.2	21.5	21.6	21.9	22.3	18.8	19.1	19.2	19.5	19.9
6H	21.0	21.3	21.5	21.7	22.2	18.7	19.0	19.1	19.4	19.8
8H	21.0	21.2	21.4	21.6	22.1	18.6	18.9	19.1	19.3	19.8
Variations with the observer position at spacings(CIE Pub.117):										
S = 1.0H	+ 3.7 / -14.9					+ 2.7 / -16.4				
1.5H	+ 5.3 / -10.5					+ 4.3 / -12.2				
2.0H	+ 6.8 / -15.7					+ 6.2 / -15.6				

CIE Pub.117, 150.8 lm Total Lamp Luminous Flux Correct (8log(F/F0) = -6.6)
 Area: 0.00049 m2

C Range: 0 - 360DEG
 C Interval: 22.5DEG
 Test Speed: HIGH
 Temperature:25DEG
 Operators:
 Test Date:2024-04-05

γ Range: 0 - 90DEG
 γ Interval: 1.0DEG
 Test System:EVERFINE GO-2000B_V1 SYSTEM V2.00.428
 Humidity:65.0%
 Test Distance:7.450m [K=1.0000]
 Remarks:

UTILIZATION FACTORS TABLE

Test:U:230.49V I:0.0317A P:3.2602W PF:0.4458 Freq:49.99Hz Lamp Flux:150.80lx1 lm		
NAME: DL23-WH4K3S03	TYPE:	WEIGHT:
SPEC.: white RA80	DIM.:	SERIAL No.:
MFR.:	SUR.: 25mm	Shielding Angle:

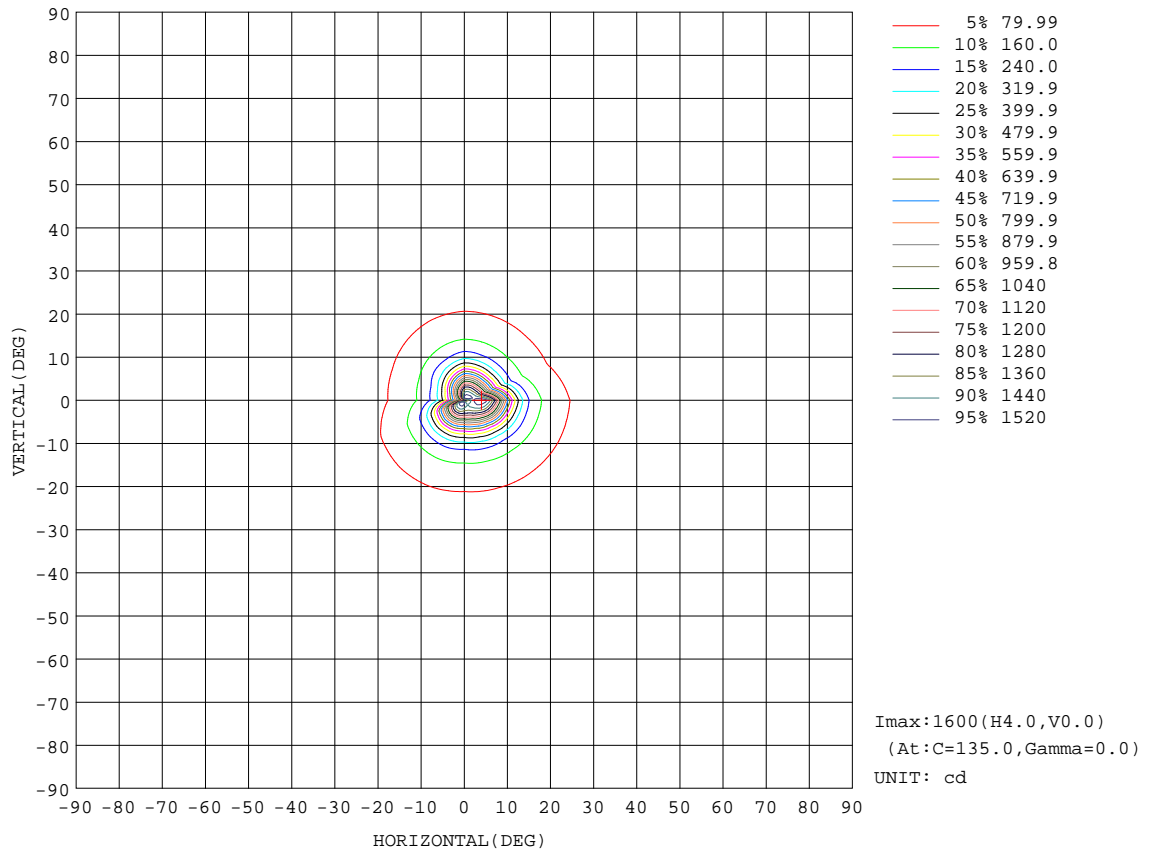
REFLECTANCE										
Ceiling	0.8	0.8	0.8	0.7	0.7	0.7	0.5	0.5	0.5	0
Walls	0.7	0.5	0.3	0.7	0.5	0.3	0.7	0.5	0.3	0
Working plane	0.2	0.2	0.2	0.2	0.2	0.2	0.2	0.2	0.2	0
ROOM INDEX	UTILIZATION FACTORS(PERCENT) $k(RI) \times RCR = 5$									
k = 0.60	90	84	81	90	84	81	89	84	80	77
0.80	97	92	88	97	91	88	95	91	88	84
1.00	101	96	93	100	96	92	99	95	92	88
1.25	105	100	97	104	99	96	102	98	96	92
1.50	107	103	100	106	102	99	104	101	98	94
2.00	110	106	103	108	105	102	106	103	101	96
2.50	111	108	105	110	106	104	106	104	102	96
3.00	112	109	107	111	108	106	107	105	104	97
4.00	114	112	110	112	110	108	109	107	106	99
5.00	116	113	112	113	112	110	110	108	107	100
ROOM INDEX	UF(total)									Direct
According to DIN EN 13032-2 2004			Suspended				SHRNOM = 1.25			

C Range: 0 - 360DEG
 C Interval: 22.5DEG
 Test Speed: HIGH
 Temperature:25DEG
 Operators:
 Test Date:2024-04-05

γ Range: 0 - 90DEG
 γ Interval: 1.0DEG
 Test System:EVERFINE GO-2000B_V1 SYSTEM V2.00.428
 Humidity:65.0%
 Test Distance:7.450m [K=1.0000]
 Remarks:

ISOCANDELA DIAGRAM

Test:U:230.49V I:0.0317A P:3.2602W PF:0.4458 Freq:49.99Hz Lamp Flux:150.80lx1 lm		
NAME: DL23-WH4K3S03	TYPE:	WEIGHT:
SPEC.: white RA80	DIM.:	SERIAL No.:
MFR.:	SUR.: 25mm	Shielding Angle:



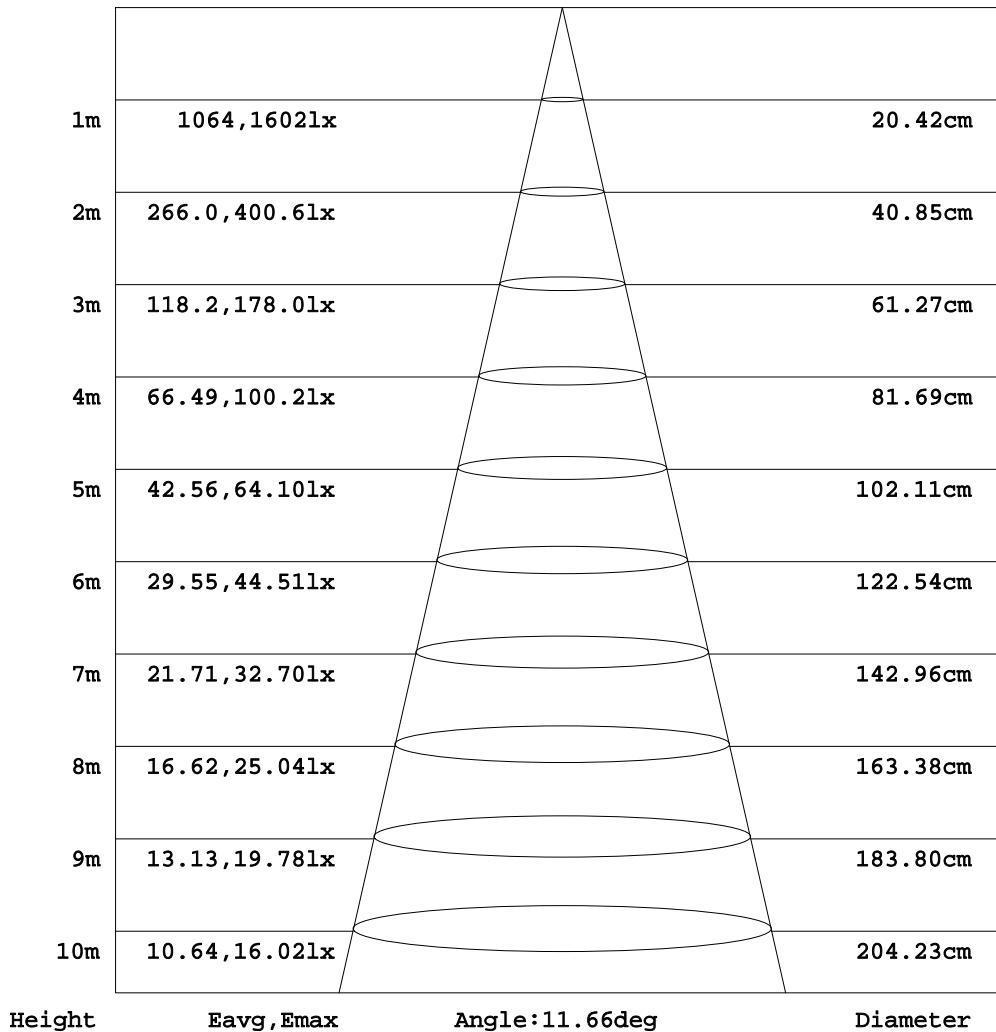
C Range: 0 - 360DEG
 C Interval: 22.5DEG
 Test Speed: HIGH
 Temperature:25DEG
 Operators:
 Test Date:2024-04-05

γ Range: 0 - 90DEG
 γ Interval: 1.0DEG
 Test System:EVERFINE GO-2000B_V1 SYSTEM V2.00.428
 Humidity:65.0%
 Test Distance:7.450m [K=1.0000]
 Remarks:

AAI Figure

Test:U:230.49V I:0.0317A P:3.2602W PF:0.4458 Freq:49.99Hz Lamp Flux:150.80lx1 lm		
NAME: DL23-WH4K3S03	TYPE:	WEIGHT:
SPEC.: white RA80	DIM.:	SERIAL No.:
MFR.:	SUR.: 25mm	Shielding Angle:

Flux out:36.92 lm



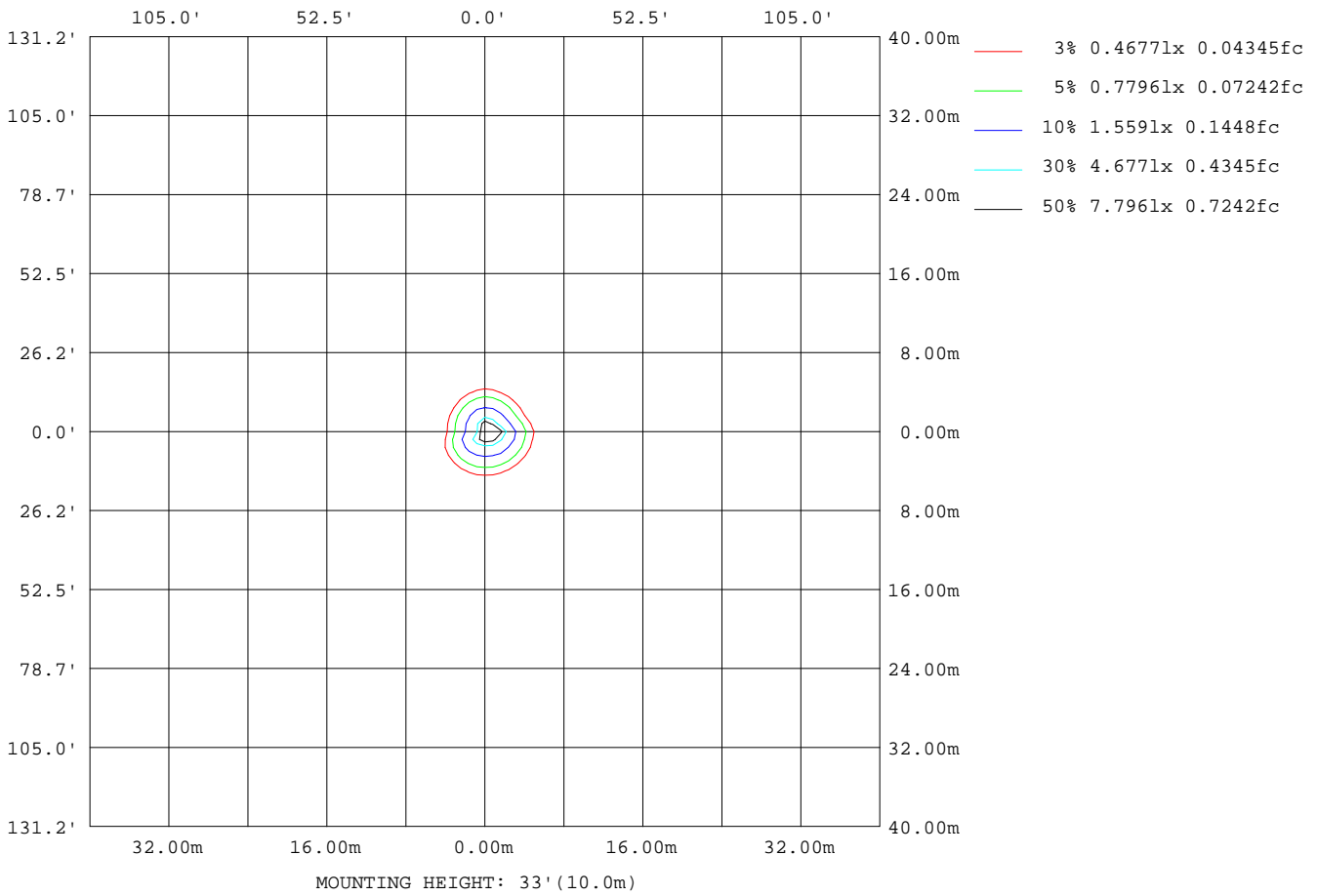
Note:The Curves indicate the illuminated area and the average illumination when the luminaire is at different distance.

C Range: 0 - 360DEG
 C Interval: 22.5DEG
 Test Speed: HIGH
 Temperature:25DEG
 Operators:
 Test Date:2024-04-05

γ Range: 0 - 90DEG
 γ Interval: 1.0DEG
 Test System:EVERFINE GO-2000B_V1 SYSTEM V2.00.428
 Humidity:65.0%
 Test Distance:7.450m [K=1.0000]
 Remarks:

ISOLUX DIAGRAM

Test:U:230.49V I:0.0317A P:3.2602W PF:0.4458 Freq:49.99Hz Lamp Flux:150.80lx1 lm		
NAME: DL23-WH4K3S03	TYPE:	WEIGHT:
SPEC.: white RA80	DIM.:	SERIAL No.:
MFR.:	SUR.: 25mm	Shielding Angle:



C Range: 0 - 360DEG
 C Interval: 22.5DEG
 Test Speed: HIGH
 Temperature: 25DEG
 Operators:
 Test Date: 2024-04-05

γ Range: 0 - 90DEG
 γ Interval: 1.0DEG
 Test System: EVERFINE GO-2000B_V1 SYSTEM V2.00.428
 Humidity: 65.0%
 Test Distance: 7.450m [K=1.0000]
 Remarks:

LED Avg.L Report

Test:U:230.49V I:0.0317A P:3.2602W PF:0.4458 Freq:49.99Hz Lamp Flux:150.80lx1 lm		
NAME: DL23-WH4K3S03	TYPE:	WEIGHT:
SPEC.: white RA80	DIM.:	SERIAL No.:
MFR.:	SUR.: 25mm	Shielding Angle:

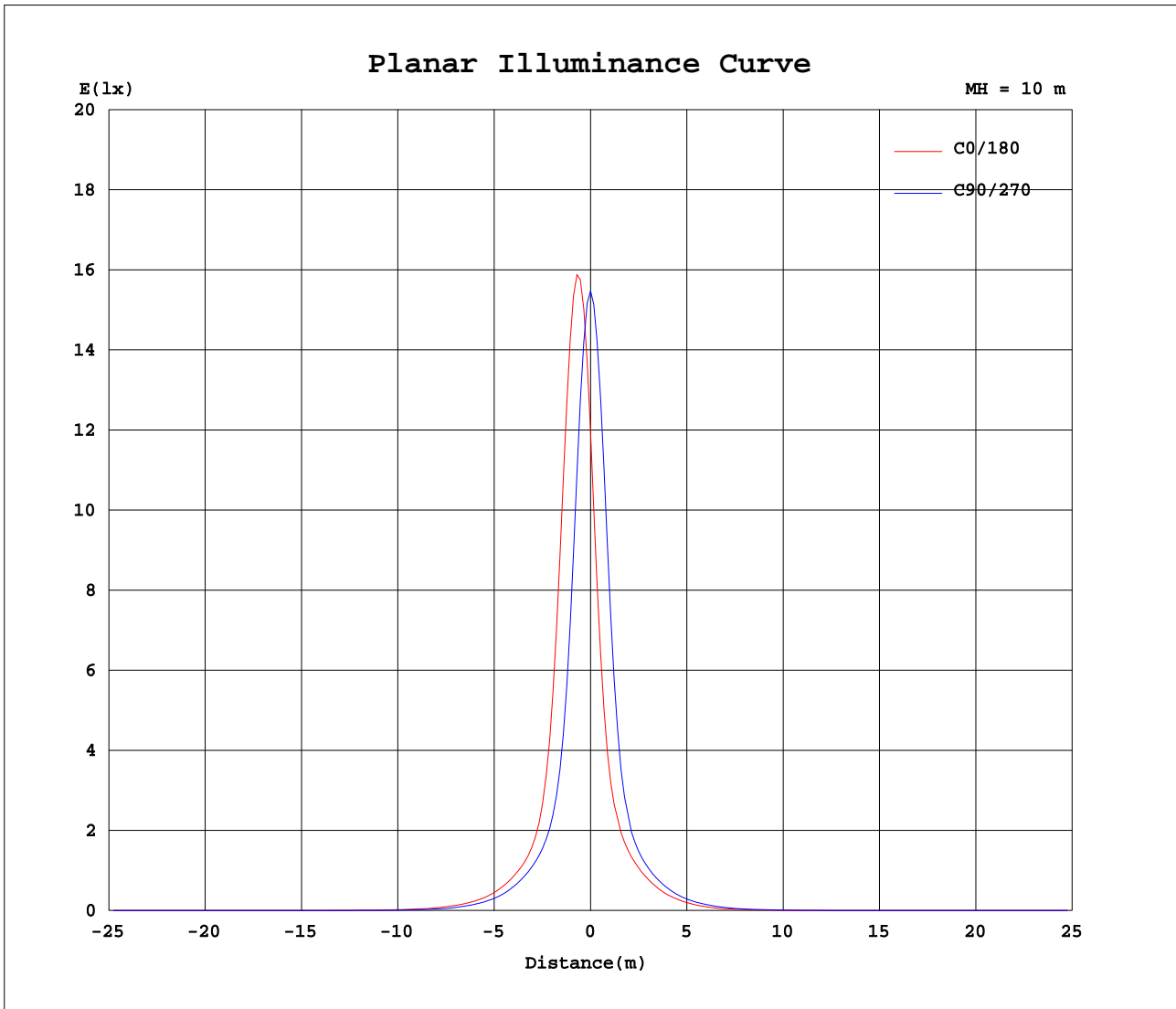
AvgL	cd/m2
L_0~180(65)av	299
L_0~180(75)av	0
L_0~180(85)av	0
L_90~270(65)av	177
L_90~270(75)av	0
L_90~270(85)av	0
L_45(65)av	173
L_45(75)av	0
L_45(85)av	0

Standard: GB/T 29293-2012

C Range: 0 - 360DEG
 C Interval: 22.5DEG
 Test Speed: HIGH
 Temperature:25DEG
 Operators:
 Test Date:2024-04-05

γ Range: 0 - 90DEG
 γ Interval: 1.0DEG
 Test System:EVERFINE GO-2000B_V1 SYSTEM V2.00.428
 Humidity:65.0%
 Test Distance:7.450m [K=1.0000]
 Remarks:

Planar Illuminance Curve



C Range: 0 - 360DEG
 C Interval: 22.5DEG
 Test Speed: HIGH
 Temperature: 25DEG
 Operators:
 Test Date: 2024-04-05

γ Range: 0 - 90DEG
 γ Interval: 1.0DEG
 Test System: EVERFINE GO-2000B_V1 SYSTEM V2.00.428
 Humidity: 65.0%
 Test Distance: 7.450m [K=1.0000]
 Remarks:

LUMINOUS DISTRIBUTION INTENSITY DATA

Test:U:230.49V I:0.0317A P:3.2602W PF:0.4458 Freq:49.99Hz Lamp Flux:150.801x1 lm		
NAME: DL23-WH4K3S03	TYPE:	WEIGHT:
SPEC.: white RA80	DIM.:	SERIAL No.:
MFR.:	SUR.: 25mm	Shielding Angle:

Table--1

UNIT: cd

C(DEG) γ (DEG)	0	22.5	45	67.5	90	112.5	135	157.5	180	202.5	225	247.5	270	292.5	315	337.5			
0	1194	1253	1360	1442	1547	1600	1602	1596	1194	1253	1360	1442	1547	1600	1602	1596			
5	1555	1395	1160	984	909	952	951	875	400	455	583	745	923	953	970	1055			
10	736	578	420	337	301	311	310	287	179	190	228	255	297	297	302	331			
15	241	211	179	162	152	157	156	149	106	111	123	135	145	144	143	150			
20	128	119	106	96.6	90.8	93.7	93.3	88.9	61.3	64.6	72.3	80.4	85.5	84.6	84.0	88.0			
25	75.8	69.6	61.2	54.9	51.2	53.0	52.9	50.5	34.0	35.8	40.7	45.1	48.5	47.9	47.4	49.6			
30	42.4	39.2	34.2	30.6	28.4	29.0	28.8	27.4	17.5	18.7	21.8	24.6	27.0	26.9	26.8	28.2			
35	23.8	21.8	18.3	15.9	14.5	14.7	14.5	13.7	8.55	8.97	10.2	11.9	14.0	14.1	14.3	15.2			
40	12.2	10.8	8.83	7.68	7.19	7.28	7.30	6.96	4.58	4.91	5.49	6.22	7.22	7.56	7.69	8.08			
45	6.82	6.02	4.64	3.91	3.61	3.72	3.72	3.47	1.93	2.31	2.62	2.99	3.76	3.97	4.08	4.35			
50	3.39	3.00	2.14	1.74	1.61	1.46	1.53	1.18	0.35	0.64	1.03	1.28	1.71	1.58	1.64	1.69			
55	1.16	1.04	0.68	0.41	0.31	0.25	0.28	0.21	0.11	0.19	0.19	0.27	0.29	0.32	0.30	0.33			
60	0.28	0.22	0.20	0.13	0.14	0.11	0.12	0.07	0.01	0.07	0.05	0.13	0.12	0.15	0.11	0.16			
65	0.12	0.09	0.09	0.03	0.06	0.00	0.03	0.00	0.00	0.01	0.00	0.05	0.02	0.06	0.02	0.07			
70	0.05	0.00	0.02	0.00	0.01	0.00	0.00	0.00	0.00	0.00	0.00	0.00	0.00	0.01	0.00	0.02			
75	0.00	0.00	0.00	0.00	0.00	0.00	0.00	0.00	0.00	0.00	0.00	0.00	0.00	0.00	0.00	0.00			
80	0.00	0.00	0.00	0.00	0.00	0.00	0.00	0.00	0.00	0.00	0.00	0.00	0.00	0.00	0.00	0.00			
85	0.00	0.00	0.00	0.00	0.00	0.00	0.00	0.00	0.00	0.00	0.00	0.00	0.00	0.00	0.00	0.00			
90	0.00	0.00	0.00	0.00	0.00	0.00	0.00	0.00	0.00	0.00	0.00	0.00	0.00	0.00	0.00	0.00			

C Range: 0 - 360DEG
 C Interval: 22.5DEG
 Test Speed: HIGH
 Temperature:25DEG
 Operators:
 Test Date:2024-04-05

γ Range: 0 - 90DEG
 γ Interval: 1.0DEG
 Test System:EVERFINE GO-2000B_V1 SYSTEM V2.00.428
 Humidity:65.0%
 Test Distance:7.450m [K=1.0000]
 Remarks: